



德新中學

NORTH VISTA SECONDARY SCHOOL

Journeying With Your Child In NV

Secondary 1

7 July 2022



德新中學

NORTH VISTA SECONDARY SCHOOL

Presenters for Today:

Mr Yap Thiam Chuan	Principal
Mdm Suhana	Year Head Sec 1
Mr William Goh	Head of Department/CCE
Ms Zoeraine Lim	Assistant Year Head Sec 1
Ms Maggie Tan	Head of Department/ Humanities
Mr Steven Chua	Chairman of NV Parent Partnership (NVPP)



德新中學

NORTH VISTA SECONDARY SCHOOL

Form Teachers and Year Council Members

Class	FT(s)	Year Council Member	Class	FT(s)	Year Council Member
1E1	Mdm Dorothy Tan	Ms Annaliza/ Mrs Elvina Tian	1N1	Ms Nurzuhailah Mr Darren Tan	Mdm Suhana
1E2	Ms Kalyani Mr Liew Boon Kui	Ms Maggie Tan	1N2	Mr Melvin Seow Mdm Song Xuejing	Ms Zoeraine Lim
1E3	Ms Lim Jia Hui Mr Ong Ben Ping	Mdm Suhana	1N3	Ms Dino Loo Mr Tan Zhi Xiang	Mrs Lily Theodore
1E4	Ms Alvina Koh Ms Brenda Lo	Ms Zoeraine Lim	1T1	Mr Rick Ho Ms Nurdianah Zohari	Mrs Elvina Tian



德新中學

NORTH VISTA SECONDARY SCHOOL

School Experiences

- Level camp
- Applied Learning Programme
- Cross Culture Programme
- Assembly at Parade Square
- Vistarian Road Run
- Youth Day Upcycling Activity



德新中學

NORTH VISTA SECONDARY SCHOOL

Principal's Welcome Address

Mr Yap Thiam Chuan



德新中學

NORTH VISTA SECONDARY SCHOOL

Student Development & Student Well-being

Mdm Suhana
Year Head (Sec 1)



德新中學

NORTH VISTA SECONDARY SCHOOL

Understanding Your Child

Adolescence:

- Hormonal changes due to puberty
- Behavioural changes
 - Mood swings / Stress
 - Change in attitude
 - Peer influence / Peer pressure
 - Need for social identity
 - Desire for independence
 - Obsession with physical appearance



德新中學

NORTH VISTA SECONDARY SCHOOL

Social Emotional Support

- Parent-Child Relationship
- Home-School Partnership
- Teacher-Student Chat
- Form Teachers as significant adults for your children in school
- Peer Support



德新中學

NORTH VISTA SECONDARY SCHOOL

What can we do?

- **Seek to Understand**
 - Express our understanding
 - Create more channels for communication
- **Respect**
 - Refrain from “talking down” to them
 - Hear them out
 - Give them choices
 - Allow time and space for growth



德新中學

NORTH VISTA SECONDARY SCHOOL

What can we do?

- **Encourage**
 - Forgive and forget – do not bear grudges
 - Refrain from comparing child with others
 - Offer sincere encouragement
 - Praise effort, not the performance outcome
 - Be patient; Do not give up!



德新中學

NORTH VISTA SECONDARY SCHOOL

Grit

Mr William Goh
HOD/CCE



德新中學

NORTH VISTA SECONDARY SCHOOL

Grit

One characteristic emerged as a significant predictor of success. It was grit.

Angela Duckworth

Academic, psychologist, writer



德新中學

NORTH VISTA SECONDARY SCHOOL

Grit

Grit is sticking with your future, day in, day out, not just for the week, not just for the month, but for years, and working really hard to make that future a reality. Grit is living life like it's a marathon, not a sprint.

Angela Duckworth



德新中學

NORTH VISTA SECONDARY SCHOOL

Grit

Growth Mindset is a great approach to building grit in children.

Growth Mindset is the belief that our abilities can be developed and improved through dedication and hard work and where individuals embrace the power of 'Yet'.



德新中學

NORTH VISTA SECONDARY SCHOOL

Grit

*Your children will become who you are;
So be who you want them to be.*



德新中學
NORTH VISTA SECONDARY SCHOOL

National Digital Literacy Programme (NDLP)

Personal Learning Device (PLD) Initiative

Ms Zoeraine Lim
Assistant Year Head (Sec 1)



德新中學

NORTH VISTA SECONDARY SCHOOL

Learning Outcomes of the PLD Initiative

- The use of PLD:
 - Supports the development of digital literacy
 - Supports self-directed and collaborative learning
 - Enhances teaching and learning



德新中學

NORTH VISTA SECONDARY SCHOOL

The Device



- Acer **R752TN**
- Specifications:
 - Intel Celeron N4120 processor
 - 8GB RAM
 - 64GB Storage
 - 11.6" Screen Size



德新中學

NORTH VISTA SECONDARY SCHOOL

The Device

Device Bundle includes

- Acer ChromeBook
- All accessories (Power Adaptor, Mouse, Stylus, Carrier Bag)
- Warranty and insurance as follows

Your child's/ward's PLD will come with the **Enhanced Device Bundle** which includes:

- 3-year warranty and 3-year insurance
- 2 repairs or 1 replacement claim



德新中學

NORTH VISTA SECONDARY SCHOOL

The Device

Things to take note:

- The packaging box is needed for the 1:1 exchange within 7 days of purchase (if applicable)
- Students should bring the device to the ICT hub to report any issues with the device and seek advice.

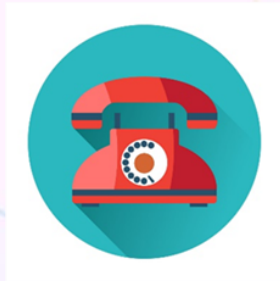


德新中學

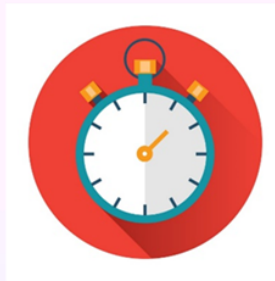
NORTH VISTA SECONDARY SCHOOL

The Device

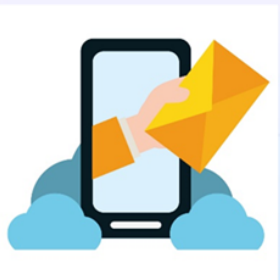
Acer Customer Service



Help Desk Number:
6895 6278



Help Desk Operating Hours:
Mon, Tue, Thu, Fri: 0845 – 1715
Wed: 0845 – 1945
Sat: 0900 – 1200
Sun and Public Holiday: Closed



Help Desk Email:
acercare.sg@acer.com



Website:
<https://secured.acer.com.sg/pld>
(For buying of accessories)



德新中學

NORTH VISTA SECONDARY SCHOOL

Supporting Students in the Safe and Effective Use of the Devices

The school has measures in place to enable a safer digital environment for learning with the use of PLDs, e.g.

- Classroom management and routines
- Educating students on Cyber Wellness
- Partnering parents/guardians to ensure that students are well supported in their use of technology for learning
- Device Management Application (DMA)



德新中學

NORTH VISTA SECONDARY SCHOOL

Classroom Management and Routines

NORTH VISTA SECONDARY SCHOOL

Expectations & Routines

on usage of Personal Learning Device



CHARGE YOUR DEVICE DAILY



REMEMBER YOUR PASSWORDS



REPORT MISUSE OF TECHNOLOGY

For example,

- Cyberbullying
- Sharing of undesirable materials



BE RESPONSIBLE IN YOUR USE OF DEVICE

- Store your device under lock and key
- Use device only when teacher allows



德新中學
NORTH VISTA SECONDARY SCHOOL

Device Management Application

- Your child's/ward's PLD will be installed with a Device Management Application (DMA) to provide a safer digital environment for learning.
- The DMA will be **funded by MOE** and will be **uninstalled** from the device **when your child/ward graduates/leaves the school.**



In-School DMA Settings (Default)

Schools will determine DMA settings for **in-school use**. As a default, these settings will continue to be in place after school as well:

- MOE and the school will set the level of web content filtering, including filtering out objectionable content or content that may not be conducive to teaching and learning (e.g. social media, pornography, gambling, or websites containing extremist content)
- Students will be able to use the device from 6.30 am to 11.00 pm daily
- The school will determine the apps and programs to be installed to support teaching and learning



Providing Parents/Guardians with Greater Choice for After-School PLD Use

Default	Option A	Option B
In-school DMA settings will continue after school hours	Parents/Guardians can modify the DMA settings after school hours	Parents/Guardians can choose to disable DMA after school hours
For parents/guardians who want their child's/ward's use of the devices to be restricted only to teaching and learning, and prefer to leave it to the school to decide on DMA settings after school hours.	For parents/guardians who want more leeway over the use of the device, and prefer to take charge of the level of restrictions for their child's/ward's use of the device after school hours.	For parents/guardians who do not want their child's/ward's use of the device to be regulated by DMA after school.

- Having default school settings continue after school hours is the best option for parents/guardians who prefer not to, or do not feel ready to manage their child's/ward's device use on their own.
- Parents/guardians can request to change their choice of DMA settings.



德新中學

NORTH VISTA SECONDARY SCHOOL

Deciding on the Choice of After-School DMA Option

Some questions to consider when deciding on the choice of after-school DMA option

1. Child's/ward's current device usage habits

- How much time does my child/ward spend on their device?
- How well is my child/ward able to regulate their device usage on their own?
- Does my child/ward get easily distracted while doing online learning?



德新中學

NORTH VISTA SECONDARY SCHOOL

Deciding on the Choice of After-School DMA Option

2. Parent/Guardian's involvement

- How confident and familiar am I with managing my child's/ward's cyber-wellness?
- Are there existing routines and open conversations on the use of the Internet at home?
- Am I aware of how to prevent different types of cyber threats that my child/ward might face?



Have a conversation with your child/ward to talk about which setting is best for your child's/ward's learning.



德新中學

NORTH VISTA SECONDARY SCHOOL

Deciding on the Choice of After-School DMA Option

- An announcement has been made on Parents Gateway with a letter attached with more information on the DMA.
- The in-school DMA settings will apply after school as a default.
- Should you **wish to change the after-school** DMA options, please access the online form by 12 July 2022. You need not fill up the form if you wish to continue with the default DMA settings.



德新中學

NORTH VISTA SECONDARY SCHOOL

Data Collected by the DMA

The DMA does **NOT** collect any of the following data:

- Login IDs and passwords entered into websites or into any applications
- Actions performed (e.g. posts, online comments, items added to a shopping cart, etc.) when visiting websites and using apps
- Documents and photos stored in the PLDs
- PLD location
- Webcam videos and microphone recordings



德新中學

NORTH VISTA SECONDARY SCHOOL

PDLP Resource Site

<https://go.gov.sg/nvpdlp>

NORTH VISTA SECONDARY SCHOOL

NV PDLP RESOURCE SITE

I AM A...

TEACHER

Access resources on e-Pedagogy, Digital Literacy and ICT Tools to enhance teaching and learning

STUDENT

Need help with your device? Want to learn more about ICT? Click to explore tutorials!

PARENT / GUARDIAN

Details of Parents Engagement, device, funding and resources to support your child's learning with PLD

The resource site is accessible from the school website



德新中學

NORTH VISTA SECONDARY SCHOOL

Additional Resources for Parents

To support you in keeping your child/ward safe online, you may refer to these additional resources:

- Parent Handbooks (I) and (II) on Learning with a Personal Learning Device (shared by the school)
- Parent Kit on Cyber Wellness for Your Child (<https://go.gov.sg/moe-cyber-wellness>)
- Schoolbag article 'Keeping our teens safe online' (<https://www.schoolbag.edu.sg/story/keeping-our-teens-safe-online>)
- MOE Cyber Wellness Programme (<https://www.moe.gov.sg/programmes/cyber-wellness/>)
- Media Literacy Council (<https://go.gov.sg/better-internet-sg>)
- National Library's Learning & Information Literacy Resources (<https://sure.nlb.gov.sg/>)
- TOUCH Community Services (<https://help123.sg>)



德新中學

NORTH VISTA SECONDARY SCHOOL

Academic Matters

Ms Maggie Tan
HOD/Humanities

Academic Matters

1. Academic Calendar Semester 2
2. Assessment & Promotion Criteria
3. Academic Support
4. Home-Based Learning (HBL) & Student Initiated Learning (SIL)
5. Subject-based Banding (SBB)
2023



Academic Calendar For Semester 2

Term	Week/Date	Event
3	Weeks 4 - 8	WA3
	Week 10 31 Aug	Issue of Progress Report
4	Weeks 3 – 5 28 Sep – 12 Oct	End-of-Year Exam
	Week 6	Script-Checking
	Weeks 6 – 7 21, 25 & 26 Oct	Lessons as usual
	Week 7 28 Oct	Last Day of School

Assessment & Promotion Criteria

Assessment Weighting

No more than one weighted assessment per subject, per school term.

Semester 1		Semester 2	
Weighted Assessment 1 (WA1)	Weighted Assessment 2 (WA2)	Weighted Assessment 3 (WA3)	Semestral Assessment (EYE)
Alternative Assessment OR Test 1 (15%)	Alternative Assessment OR Test 2 (15%)	Alternative Assessment OR Test 3 (15%)	55%

End-of-Year Examination (EYE)

Wed 28 Sep – Wed 12 Oct

Exam Timetable:

Will be printed & distributed by 19 Aug

Exam Topics and Format:

Will be uploaded on School Website by 19 Aug



Promotion Criteria (Express course)

Met Minimum Attainment Level: Pass in EL and a pass in overall percentage of all subjects combined	Not Met Minimum Attainment Level
Promoted to Sec 2Exp	Laterally Transferred to Sec 2NA

Scoring (Express)	
Grade	Marks
A1	75 and above
A2	70-74
B3	65-69
B4	60-64
C5	55-59
C6	50-54
D7	45-49
E8	40-44
F9	Below 40

Promotion Criteria (NA course)

Met Minimum Attainment Level:	Not Met Minimum Attainment Level
<p>Grade 5 or better in</p> <ul style="list-style-type: none"> - EL and 2 other subjects OR - 4 subjects <p>Promoted to Sec 2NA</p>	<p>Retained at Sec 1NA</p> <p>[May be transferred to Sec 2NT if deemed more suited for NT course]</p>

Scoring (NA)	
Grade	Marks
1	75-100
2	70-74
3	65-69
4	60-64
5	50-59
U	Below 50

Lateral transfer from 1NA to 2Exp

Met Minimum Attainment Level AND Lateral Transfer Guideline:

- Grade 5 or better in EL and 2 other subjects
OR 4 subjects

AND

- Minimum of 70% in the overall percentage of all subjects combined

Promotion Criteria (NT course)

Met Minimum Attainment Level: Grade D or better in 2 subjects, one of which should be EL or Mathematics	Not Met Minimum Attainment Level
Promoted to Sec 2NT	Retained at Sec 1NT

Scoring (NT)	
Grade	Marks
A	75-100
B	70-74
C	60-69
D	50-59
U	Below 50

Lateral transfer from 1NT to 2NA

Met Minimum Attainment Level AND Lateral Transfer Guideline:

- Grade D or better in 2 subjects, one of which should be EL or Mathematics

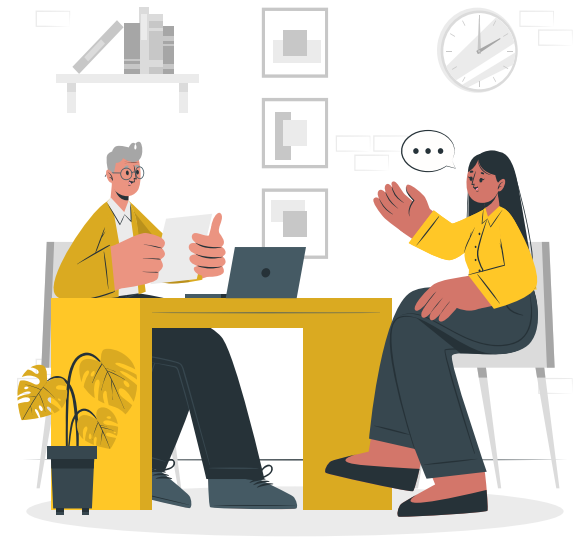
AND

- Minimum of 70% in the overall percentage of all subjects combined

Academic Support

Academic Support in NV

- ▶ **Individual face-to-face/ e-Consultations:** for students who need additional help or clarification on content taught
- ▶ **Dept-based learning sessions:** focused on certain topics/ areas
- ▶ Students will be informed by their subject teachers in advance if they are required to attend the sessions and of the start/end time for each session.



Academic Support Schedule

Week/ Days	Mon	Tue	Wed	Thu	Fri
ODD week	Science	Ad-hoc	Ad-hoc	EL	Ad-hoc
EVEN week	Math	MTL	Ad-hoc	Ad-hoc consultation sessions <i>(Mode: Online)</i>	Ad-hoc

Ad-hoc: e.g. Humanities, DT, FCE, CPA

Home-Based Learning (HBL) & Student-Initiated Learning (SIL)

What is Home-Based Learning (HBL)?



Engage students in learning the curriculum using less structured approaches than a typical school day, to provide flexibility for students to practise self-directedness in planning and managing their learning.



Engage students in different modes of learning (on-screen & off-screen).



Provide about an hour of dedicated time and space for **Student-initiated Learning (SIL)**, where students can explore their interests and learn outside the curriculum.

Features of HBL @ North Vista



Asynchronous learning

- Follows a HBL schedule (SIL is featured in the schedule)
- Includes both on-screen and off-screen modes



Duration

- Overall duration for each HBL day is approximately the same
- Approximately 5 to 6 hours of curriculum work & SIL/ICT (dependent on individual students' pace of learning)



Frequency

- 1 HBL day in 10 days (9 face-to-face days)
- Every even week Thursday (unless otherwise stated)

Routine of a HBL Day (Even Week Thursdays)

- 0730 - 0750: Morning Check-in with Form Teachers
- Students will:
 - check HBL Schedule for the day (sent via email and accessible on Blended Learning Google Sites)
 - log in to Google Classrooms of different subjects to check lesson instructions from various Subject Teachers
 - plan and complete all HBL tasks, within stipulated timelines

HBL Schedule for Semester 2

Blended Learning@NV

SECONDARY 1E1 / 1E2 / 1E3 / 1E4 / 1N1 / 1N2 / 1N3									
STRUCTURED HOME-BASED LEARNING SCHEDULE 2022 (SEM 2)									
TERM 3					TERM 4				
Week 2	Week 4	Week 6	Week 8	Week 10	Week 2	Week 4	Week 6	Week 8	Week 10
7 Jul	21 Jul	4 Aug	18 Aug	1 Sep	22 Sep	6 Oct	20 Oct		
7.30-7.50am: Check in with FTs	7.30-7.50am: Check in with FTs	7.30-7.50am: Check in with FTs	7.30-7.50am: Check in with FTs	Teacher's Day Celebration in school	7.30-7.50am: Check in with FTs	End-of-Year Examination period	Script checking in school		
English	Mother Tongue	English	Mother Tongue		English				
Mathematics	Science	Mathematics	Science		Mother Tongue				
History	Literature	History	Literature		Mathematics				
Art	Geography	Art	Geography		Science				
Food & Consumer Education	Design & Technology	Food & Consumer Education	Design & Technology		Physical Education				
ICT Skills	ICT Skills	Student- Initiated Learning	Physical Education		Student- Initiated Learning				
			Student- Initiated Learning						

HBL Schedule for Semester 2

SECONDARY 1T1									
STRUCTURED HOME-BASED LEARNING SCHEDULE 2022 (SEM 2)									
TERM 3					TERM 4				
Week 2	Week 4	Week 6	Week 8	Week 10	Week 2	Week 4	Week 6	Week 8	Week 10
7 Jul	21 Jul	4 Aug	18 Aug	1 Sep	22 Sep	6 Oct	20 Oct		
7.30-7.50am: Check in with FTs	7.30-7.50am: Check in with FTs	7.30-7.50am: Check in with FTs	7.30-7.50am: Check in with FTs	Teacher's Day Celebration in school	7.30-7.50am: Check in with FTs	End-Of-Year Examination period	Script checking in school		
English	Mother Tongue	English	Mother Tongue		English				
Mathematics	Science	Mathematics	Science		Mathematics				
Social Studies	Computer Applications	Social Studies	Computer Applications		Science				
Art	Design & Technology	Art	Design & Technology		Physical Education				
Food & Consumer Education	ICT Skills	Food & Consumer Education	Physical Education		Student- Initiated Learning				
ICT Skills		Student- Initiated Learning	Student- Initiated Learning						

What is Student-Initiated Learning (SIL)?

An opportunity for students to be independent, passionate and lifelong learners.

A dedicated time during HBL for students to explore personal interests.



SIL @ NV

Explore these destinations from **HOME!**

CULTURAL CRAFTS

Art, culinary, music

RECREATIONAL RESPITES

Sports, Games



INTELLECTUAL INSIGHTS

Academic, Character,
Career

Electronic
Explorations
Technology

Subject-based Banding (SBB)

Full Subject-based Banding (FSBB)

In 2023, Humanities (History / Geography / Literature) will be offered at a more demanding level to 2023 Sec 2NA students (currently students can offer EL, MTL, MA and SCI at a more demanding level)

**Please refer to letter sent out via Parents Gateway on 19 April for more information*

Criteria to Take Higher-Level Subjects at End of Year

- a) Subject teachers' recommendation
 - Quality of Assignments
 - Learning Attitude
 - Ability to cope with subject at higher level
- b) 75% or higher in specific subject
- a) 60% or higher in the overall percentage of all subjects



德新中學
NORTH VISTA SECONDARY SCHOOL

Upcoming Milestones

Mdm Suhana
Year Head (Sec 1)



德新中學

NORTH VISTA SECONDARY SCHOOL

Upcoming Milestones

- Youth Day - Upcycling Project
- Learning for Life Programme (LLP)
- National Day Celebration
- Weighted Assessment 3 and End-of-Year Examination
- Promotion Exercise
- Parent Teacher Meeting
- Year End School Holiday (29 Oct - 3 Jan)



德新中學

NORTH VISTA SECONDARY SCHOOL

North Vista Parent Partnership (NVPP)

Mr Steven Chua
Chairman of NVPP



德新中學

NORTH VISTA SECONDARY SCHOOL

Join the North Vista Parent Partnership (NVPP)

- The NVPP consists of a group of dedicated parents who partner the school to support fellow parents in nurturing their children.
- It is the platform for parents to network, share, learn and support each other in this parenting journey.



德新中學

NORTH VISTA SECONDARY SCHOOL

North Vista Parent Partnership



Come join us!



德新中學

NORTH VISTA SECONDARY SCHOOL

Q & A



德新中學

NORTH VISTA SECONDARY SCHOOL

Thank you!